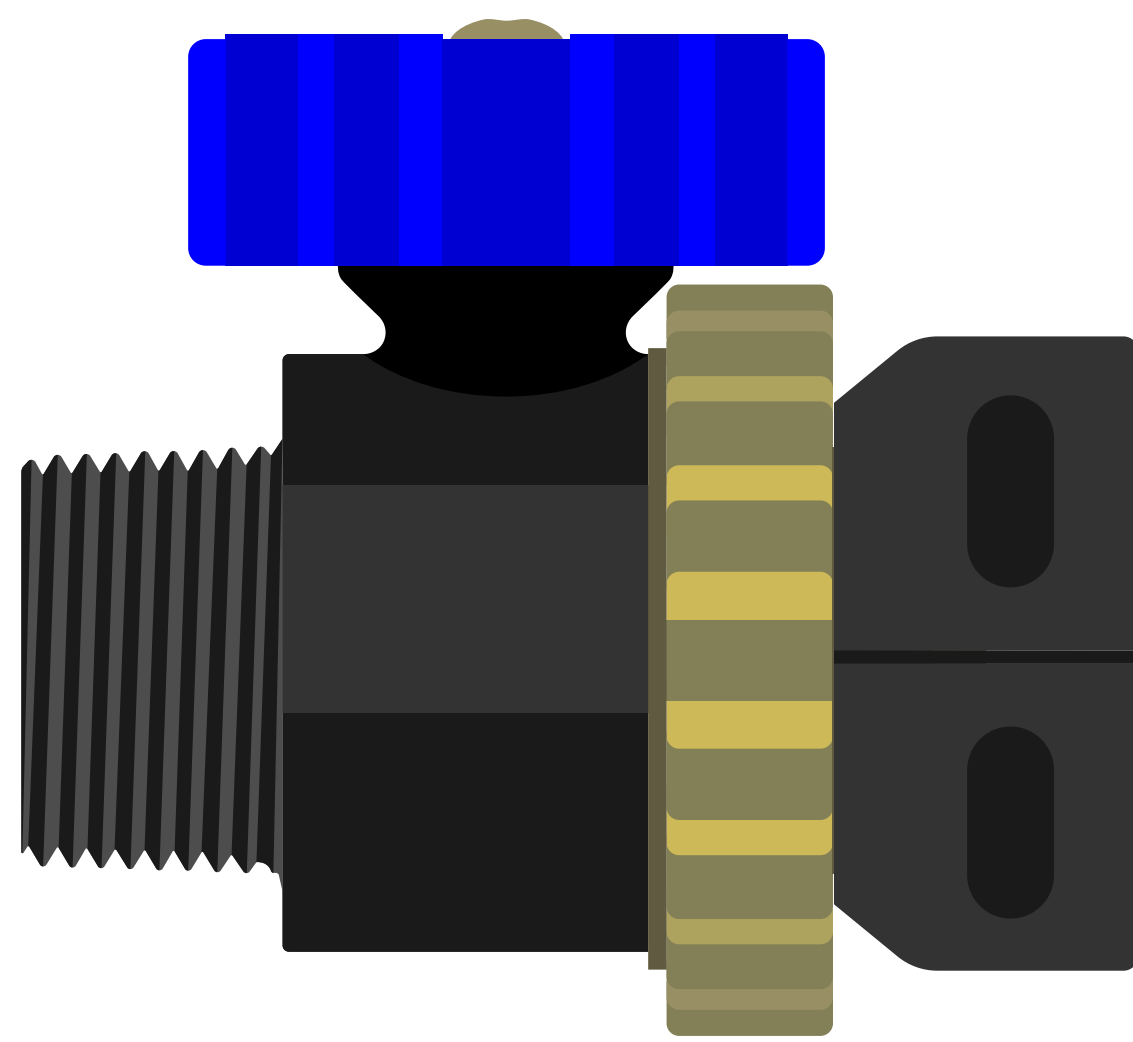


3/4" Coupling Valve

CPL Valve 07525

Product Overview and Specifications



Product

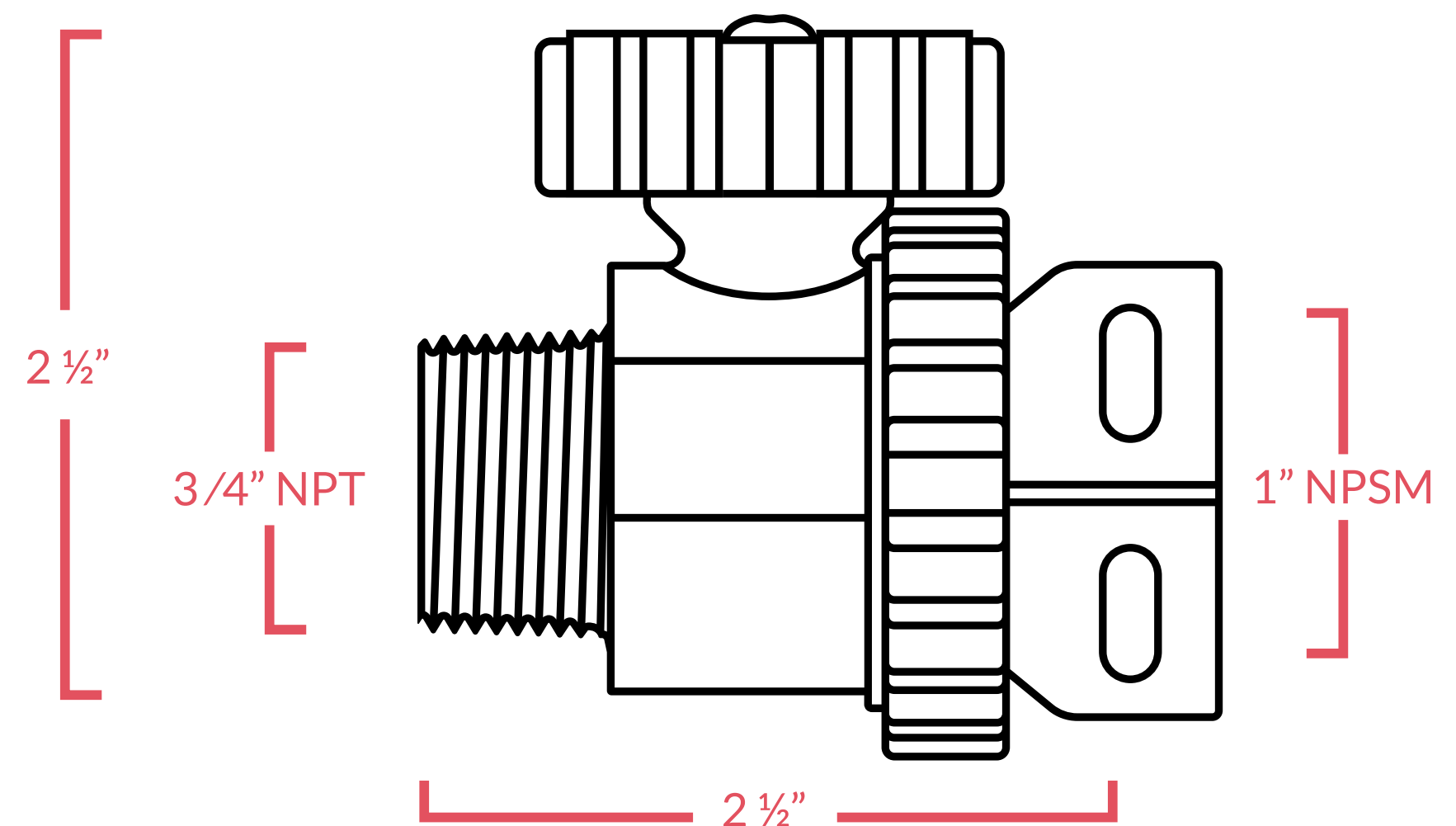
The 3/4" Coupling Valve is an all-in-one water shut-off valve and meter coupling. It is often referred to as a service valve, shutting off the water before a meter allowing for easy installation, servicing, and/or meter replacement. The 3/4" Coupling Valve is a stainless steel ball type valve, valued for longevity and the ability to work after long periods between use. Plastic (Glass filled reinforced nylon) valves, on average, outperform metal valves and are nearly maintenance free.

The 3/4" Coupling Valve is 2 1/2" in length and can be paired with a 1 1/2" coupling. This allows for 1 to 1 replacement of existing 2" couplings and meters. For 2 1/2" length couplings this is a direct replacement. The circular handle design, in contrast to lever, facilitates installation in tight spaces. By planning for a remote shut-off add-on, the 3/4" Coupling Valve is designed with an eye to the future.

For more information about this product please visit www.mtw.us.com.

Features/Specifications

- All-in-one Shut-off Valve and Meter Coupling
- NSF/ANSI/CAN 61 and 372 Certified and Marked
- Glass filled nylon valve body for strength
- Max operating pressure: 150 PSI
- Max temp 194° F | 90° C
- Nominal pipe size 3/4"
- Weight 8.6 oz
- 18-month warranty

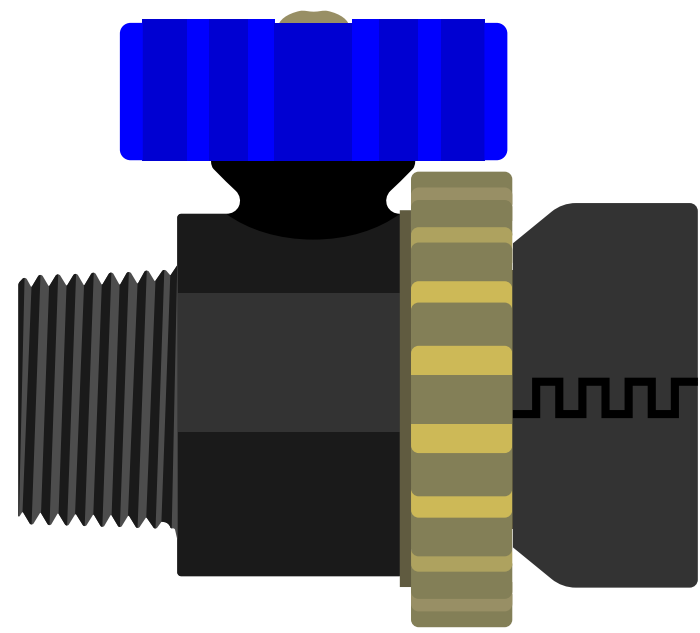


Warranty:

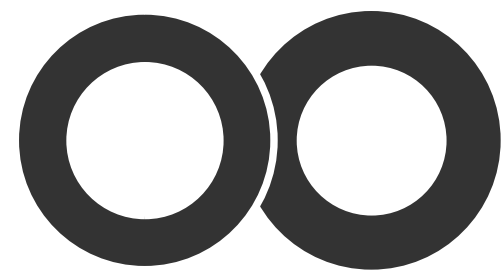
- All kit components warrantied against defects in manufacture.
- Term of 18 months from the date of manufacture.

Installation

Items Included



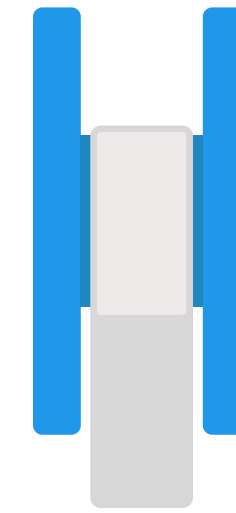
A) Coupling Valve



B) 2x Gaskets

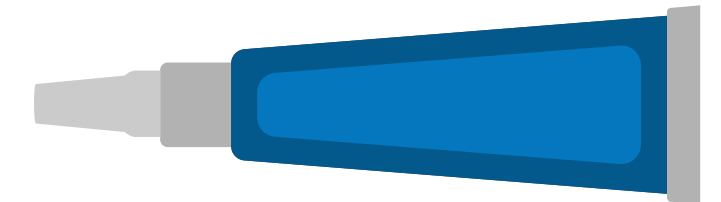
Additional Items Needed

Use either Teflon Tape (C) or Pipe Sealant (D).



C) Teflon Tape

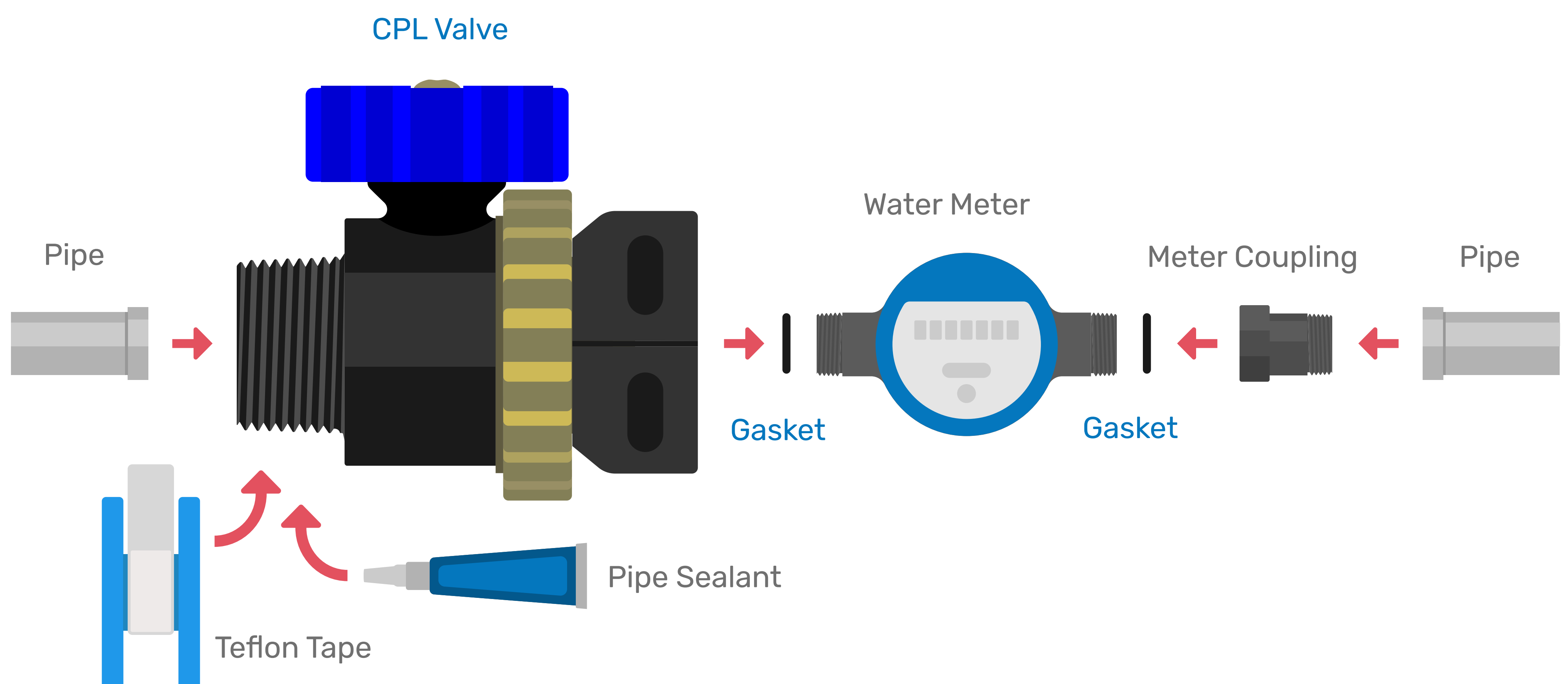
or



D) Pipe Sealant

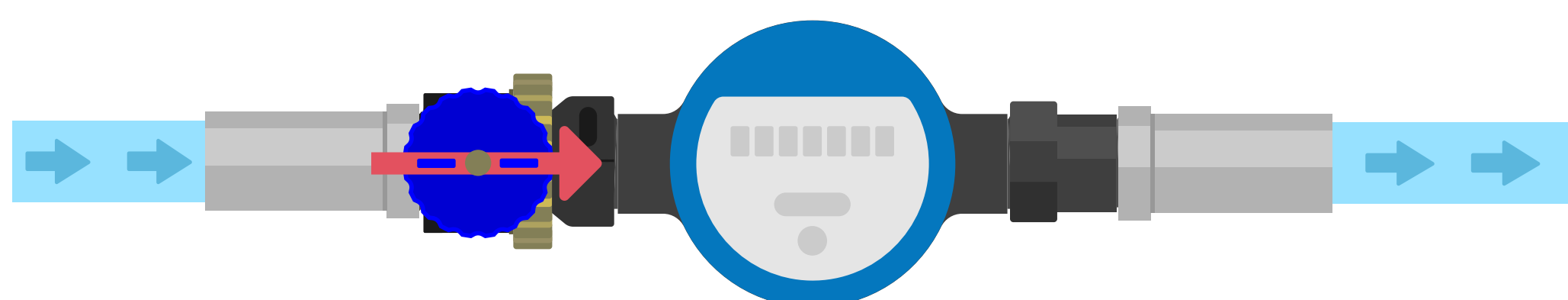
Installation

Step 1. Assemble



Step 2. Ensure Water is Turned On

Ensure valve is turned with handle's flow line parallel to pipe.



Step 3. Pressurize Line

Pressurize line and check for leaks at each connection.

