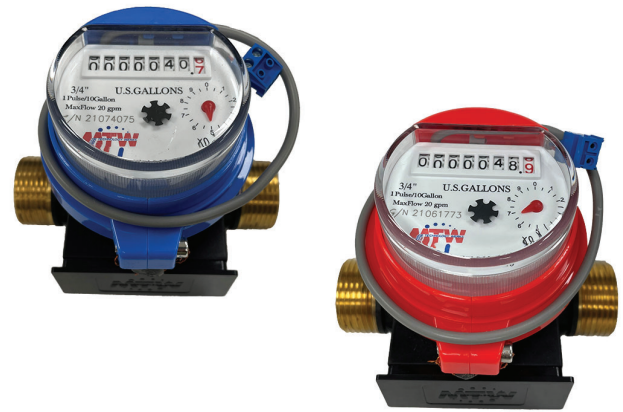


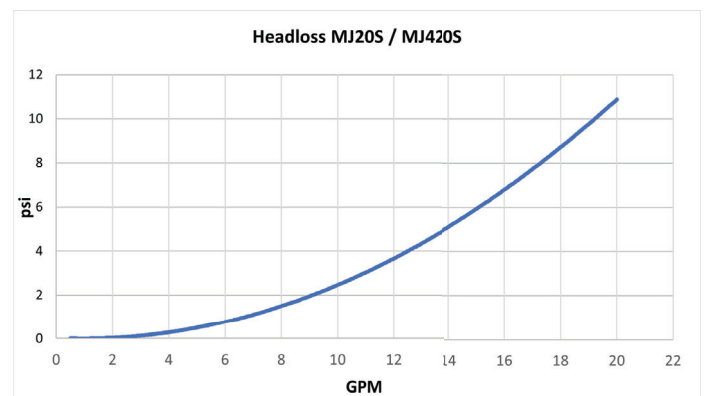
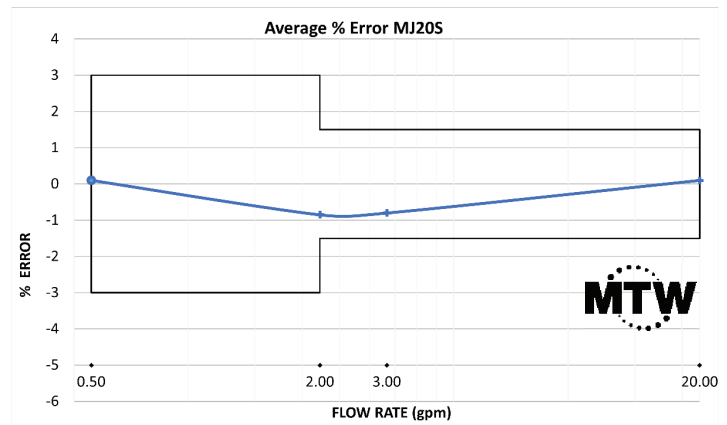
Features

- Poly casing with brass threads
- Available in cold (MJ20S) or hot (MJ420S) versions
- Pulse output (1/10 gal) or (1/1 gal)
- Sealed register for tamper resistance
- Removable mounting plate for easy installation of Next Century transceivers (TR201 & TR4)
- Meets AWWA C708 performance
- NSF/ANSI/CAN 61 and 372 certified and marked
- Quiet operation
- 1-year new meter accuracy warranty/ 5-year standard warranty for casing, register, and accuracy (AWWA C708)



Specifications

- Operating capacity 20 gpm
- Max rate for continuous duty 15 gpm
- Max pressure loss at max flow 10.9 psi
- Normal flow range (+/- 1.5%) 1-20 gpm
- Minimum flow (+/- 3%) 1/2 gpm
- Max operating pressure (psi) 150
- Max working temperature (Cold; MJ20S) 105° F
- Max working temperature (Hot; MJ420S) 194° F
- Meter casing spuds, nominal thread size 1" NPSM
- Nominal pipe size 3/4"
- Weight (lbs) 0.9
- Materials (main case) - Glass-reinforced Nylon
- Pulse Reed Switch rating: DC 24V max and 100mA max.



Application

For use in submetering applications where compact size and pulse output are desired. The MTW MJ20S / MJ420S multi-jet water meter uses a polymer casing design to allow for low weight and reduced cost but augments the meter with brass threads to reduce the likelihood of stripped threads during installation. The MJ20S / MJ420S meet NSF/ANSI/CAN 61 and 372 standards. The MTW MJ20S / MJ420S may be installed either horizontally or vertically. MTW suggests using fiber washers with the MJ420S.

